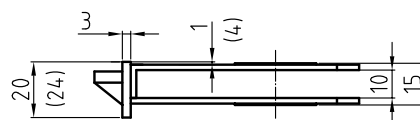
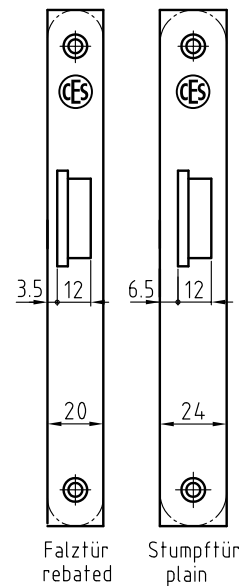
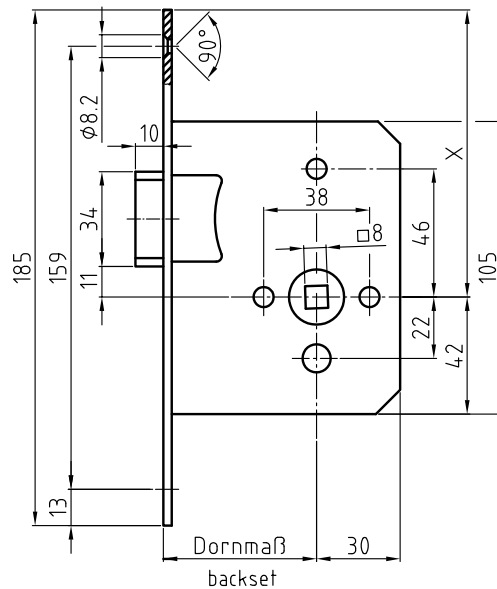


**Mortice latch-lock
with small lock case
including striking plate**

Type	Description/features	Special features													
2500	Latch-lock with small lock case prepared for handle function only, backset 55 mm, 8 mm follower, forend 20 x 185 mm for rebated doors or 24 x 185 mm for flush doors, square or radius, satin stainless steel, steel latch, nickel-plated including: 0445 – Angular striking plate for rebated doors or 0504 – Flat striking plate for flush doors	<table border="1"> <tr> <td rowspan="3">Backset</td> <td>60, 65 mm</td> </tr> <tr> <td>70, 80 mm</td> </tr> <tr> <td>90, 100 mm (article no. 25.00)</td> </tr> <tr> <td rowspan="3">Special equipment</td> <td>110, 120 mm (article no. 25.00)</td> </tr> <tr> <td>Triple latch</td> </tr> <tr> <td>Noise reduction</td> </tr> <tr> <td rowspan="4">Forend + striking plate</td> <td>9 mm follower</td> </tr> <tr> <td>Stainless steel, polished</td> </tr> <tr> <td>Brass, polished</td> </tr> <tr> <td>Other finishes</td> </tr> </table>	Backset	60, 65 mm	70, 80 mm	90, 100 mm (article no. 25.00)	Special equipment	110, 120 mm (article no. 25.00)	Triple latch	Noise reduction	Forend + striking plate	9 mm follower	Stainless steel, polished	Brass, polished	Other finishes
Backset	60, 65 mm														
	70, 80 mm														
	90, 100 mm (article no. 25.00)														
Special equipment	110, 120 mm (article no. 25.00)														
	Triple latch														
	Noise reduction														
Forend + striking plate	9 mm follower														
	Stainless steel, polished														
	Brass, polished														
	Other finishes														



Art.No. 2500