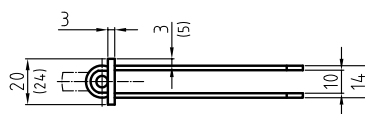
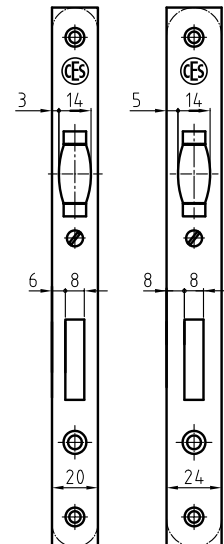
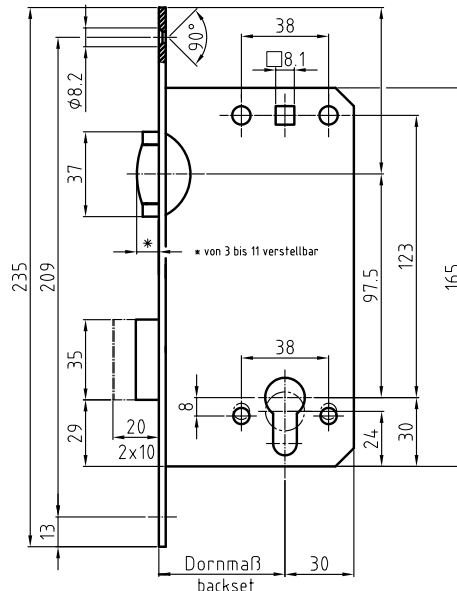


**Swing-door lock with roller-latch
with large lock case
including striking plate**

Type	Description/features	Special features									
4530	Swing-door lock with roller-latch with fitting dimensions according to DIN 18251-1 prepared for profile cylinder, backset 55 mm, forend 20 (24) x 235 mm for flush doors, square or radius, satin stainless steel, steel roller-latch and steel dead bolt, nickel-plated, with 8 mm square (spindle) and escutcheon piercings for round rose fittings including: 0510 – Striking plate with blind groove	<table border="1"> <tr> <td rowspan="4">Backset</td> <td>60 mm</td> </tr> <tr> <td>65 mm</td> </tr> <tr> <td>70 mm</td> </tr> <tr> <td>80 mm</td> </tr> <tr> <td rowspan="3">Forend + striking plate</td> <td>Stainless steel, polished</td> </tr> <tr> <td>Brass, polished</td> </tr> <tr> <td>Other designs</td> </tr> </table>	Backset	60 mm	65 mm	70 mm	80 mm	Forend + striking plate	Stainless steel, polished	Brass, polished	Other designs
Backset	60 mm										
	65 mm										
	70 mm										
	80 mm										
Forend + striking plate	Stainless steel, polished										
	Brass, polished										
	Other designs										
4590	Swing-door lock with roller-latch with fitting dimensions according to DIN 18251-1 for toilet/bathroom use with 8 mm dead-bolt follower, backset 55 mm, forend 20 (24) x 235 mm for flush doors, square or radius, satin stainless steel, steel roller-latch and steel dead bolt (single-turn 15 mm), nickel-plated, with 8 mm square (spindle) and escutcheon piercings for rose fittings including: 0510 – Striking plate with blind groove										



Art.No. 4530