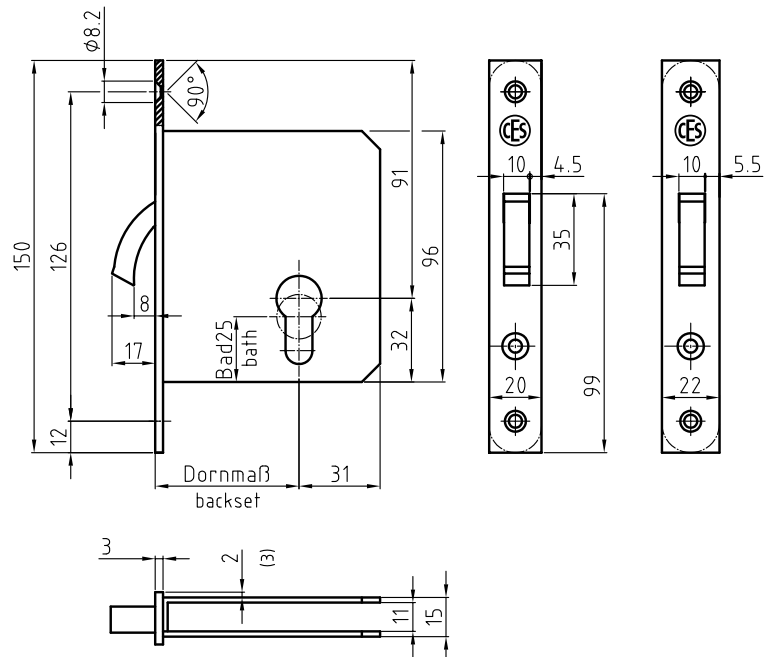
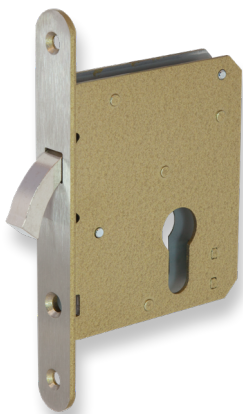


Sliding-door lock with compass-bolt including striking plate

Type	Description/features
5530N	Sliding-door lock with compass-bolt prepared for profile cylinder, backset 55 mm forend 20 (22) x 150 mm for flush doors, square or radius, satin stainless steel, compass-bolt, steel nickel-plated including: 0512 – Striking plate
5590	Sliding-door Lock with compass-bolt for toilet/bathroom use with 8 mm dead-bolt follower, backset 55 mm, forend 20 (22) x 150 mm for flush doors, square or radius, satin stainless steel, compass-bolt, steel nickel-plated including: 0512 – Striking plate



Art.No. 5530N