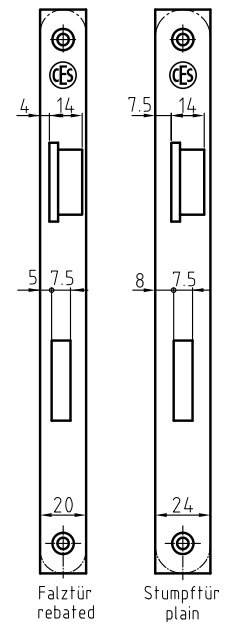
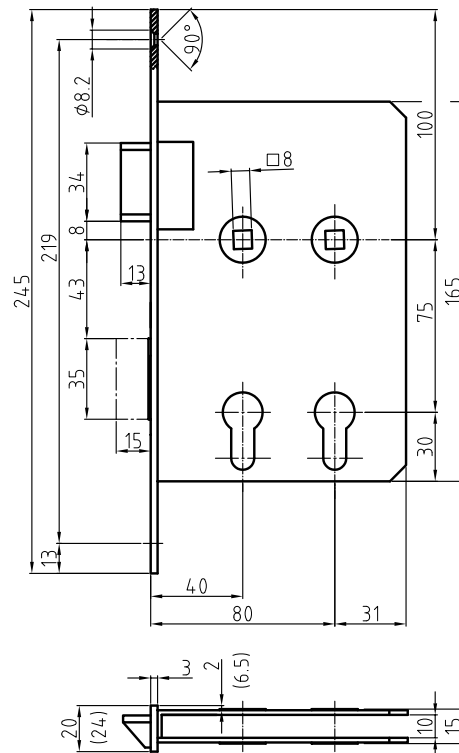


## Mortice locks for radiation shielding doors

Type	Description/features
8230	Mortice lock for radiation shielding doors prepared for profile cylinder, without transmission bar, profile piecing at 40 and 80 mm backset, centre distance 75 mm, 8 mm follower, forend 20 x 245 mm for rebated doors or 24 x 245 mm for flush doors, square or radius, satin stainless steel, brass latch bolt and brass dead bolt, nickel-plated
8234	Mortice lock for radiation shielding doors prepared for profile cylinder, with transmission bar (optionally for 40 or 80 mm backset) profile piercing at backset 40 and 80 mm centre distance 75 mm, 8 mm follower, forend 20 x 245 mm for rebated doors or 24 x 245 mm for flush doors, square or radius, satin stainless steel, brass latch bolt and brass dead bolt, nickel-plated



Art.No. 8230