

9100R

Mortice Deadlock

for single-leaf fire-rated doors

Premium Class




Features

Prepared for euro-profile-cylinder
Handed (left hand / right hand to be specified)
Centre distance 72 mm, backset 55 mm (60, 65, 70 and 80 mm)
Forend 24 (20) x 235 mm, flush (rebated) doors, edged or rounded, satin stainless steel, stainless steel 1.4301 (AISI 304)
Lock case galvanized and blue lacquered
(Solid) Deadbolt steel, nickel-plated, double throw (20 mm)
Strike plate 0508, edged or rounded, satin stainless steel, non-handed
Screws included

Classification

EN 12209	3 X 8 1 0 G 2 B A 0 0
CE marked	Approved product, certificate no. 0432-CPR-00292-02
Certifire	Approved product, certificate no. CF 5418
Fire safety	Successful fire test to BS EN 1634-1 Timber door 30, 60, 90 and 120 minutes Steel door 30, 60, 90, 120 and 240 minutes

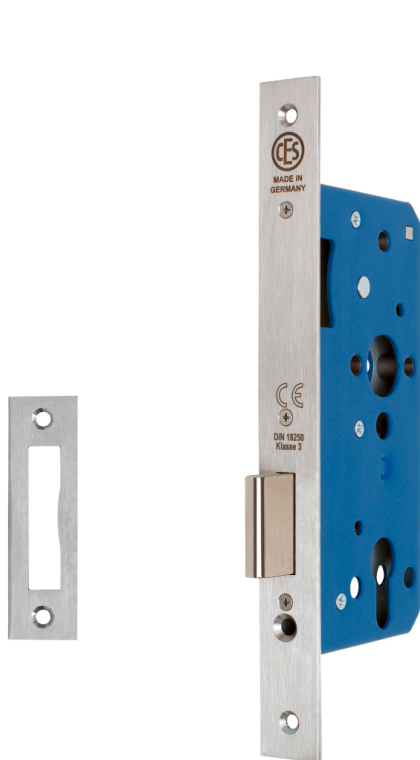
 **certifire** is a registered trademark of EXOVA WARRINGTON

Intumescent lock pack (not included in delivery)

required	For use on 60, 90, 120 minutes timber fire doors
not required	For use on 30 minutes timber fire doors and steel fire doors

CPR Declaration of Performance available for download on www.ces.eu/en

Subject to changes without notice. V11/18



Article number
0508

Article number
9100R

